

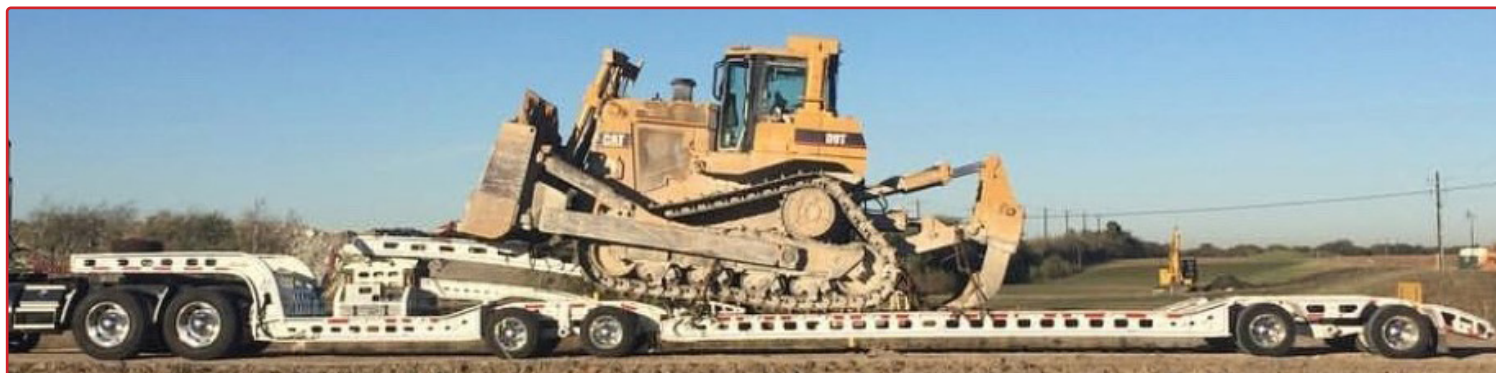
**STRONGEST  
LIGHTEST**



**EXPANDO  
OR  
FIXED 10' WIDE**

## **“LOADMASTER” 7-Axle Heavy Equipment Trailer**

**4-Frame, 16-Tire Trailer AND 16-Tire Jeep**



### **Standard Features:**

- ◇ Permitted NET Load (CA) - 60 tons
- ◇ Guaranteed over-the-back loading
- ◇ Base trailer (trailer + jeep) weight (approx.) 27,200 lbs.
- ◇ Murray EXPANDABLE running gear 8'-6" to 10' using 8 heavy duty Trunnion axles & Murray's 3-point suspension w/ UHMW wear points
- ◇ Murray detachable gooseneck (US PAT #3326527) fits both trailer and jeep so the trailer can be used in a 5-axle configuration
- ◇ Straight or tapered front corners of gooseneck
- ◇ Load over the top of the long narrow gooseneck



***REMEMBER, IT'S THE PAYLOAD THAT COUNTS!***



**Over-the-Rear Loading**

**Murray Trailers • 1745 E Mariposa Rd. • Stockton, CA 95205  
Phone: 209-466-0266 • Online: [www.murraytrailer.com](http://www.murraytrailer.com)**



# The Murray "Loadmaster"

***THE MOST VERSATILE 7-AXLE ON THE MARKET***

## Standard Features:

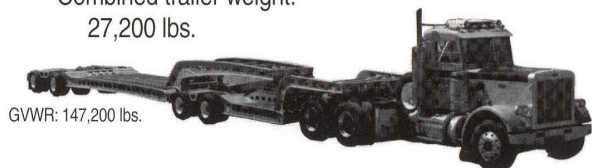
- **Construction:** All 130 KSI Minimum yield A-514 steel, 4-beam design
- **Axles:** 8 trunnions, 18,160 lbs. each
- **Suspension:** Murray 3-point system
- **Expando Power:** Murray 6" air cylinders
- **Wheels:** 8-hole, hub piloted aluminum
- **Tires:** 215/75R x 17.5 - Hankook or Continental
- **Decking:** 3" Apitong outside, 2" Douglas Fir inside
- **Paint:** DuPont IMRON ELITE
- **Goosenecks:** Mechanical Removable wide neck for jeep or trailer; long narrow neck for trailer to jeep connection
- **Unloaded Deck Height:** 27" nominal (dependent on 5th wheel height)
- **Over-front loading:** 10"
- **Over-rear loading:** 34"
- **Length:** 61' with standard 20' deck

## Exchanging goosenecks keeps trailer working . . .

*\*Weights reflect standard equipment 8'-6" wide*

### ... as double gooseneck

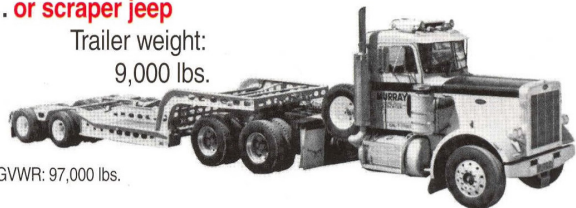
Combined trailer weight:  
27,200 lbs.



GVWR: 147,200 lbs.

### ... or scraper jeep

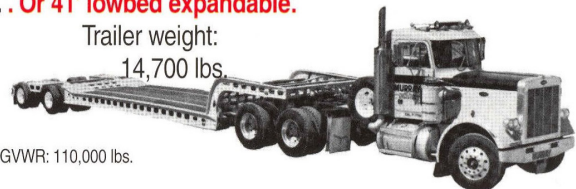
Trailer weight:  
9,000 lbs.



GVWR: 97,000 lbs.

### ... Or 41' lowbed expandable.

Trailer weight:  
14,700 lbs.



GVWR: 110,000 lbs.

## Optional Features:

- Deck Lengths to 27'-6"
- 16" Longer Gooseneck
- Second kingpin
- Air operated "RoboLink" & Deck Latch Release (US PAT #8752854, 9272591)
- Steel inside islands between tires
- Disc brakes with ABS
- Full or half wheel covers
- Lockable tool boxes in wide neck
- Front & rear loading ramps
- "D" Rings
- Outriggers
- Chain boxes
- Magnum Jeep

